
PROJECT RAPTOR



AGENDA

Introductions

Project Overview

Request to Partner

312 Tax Abatement

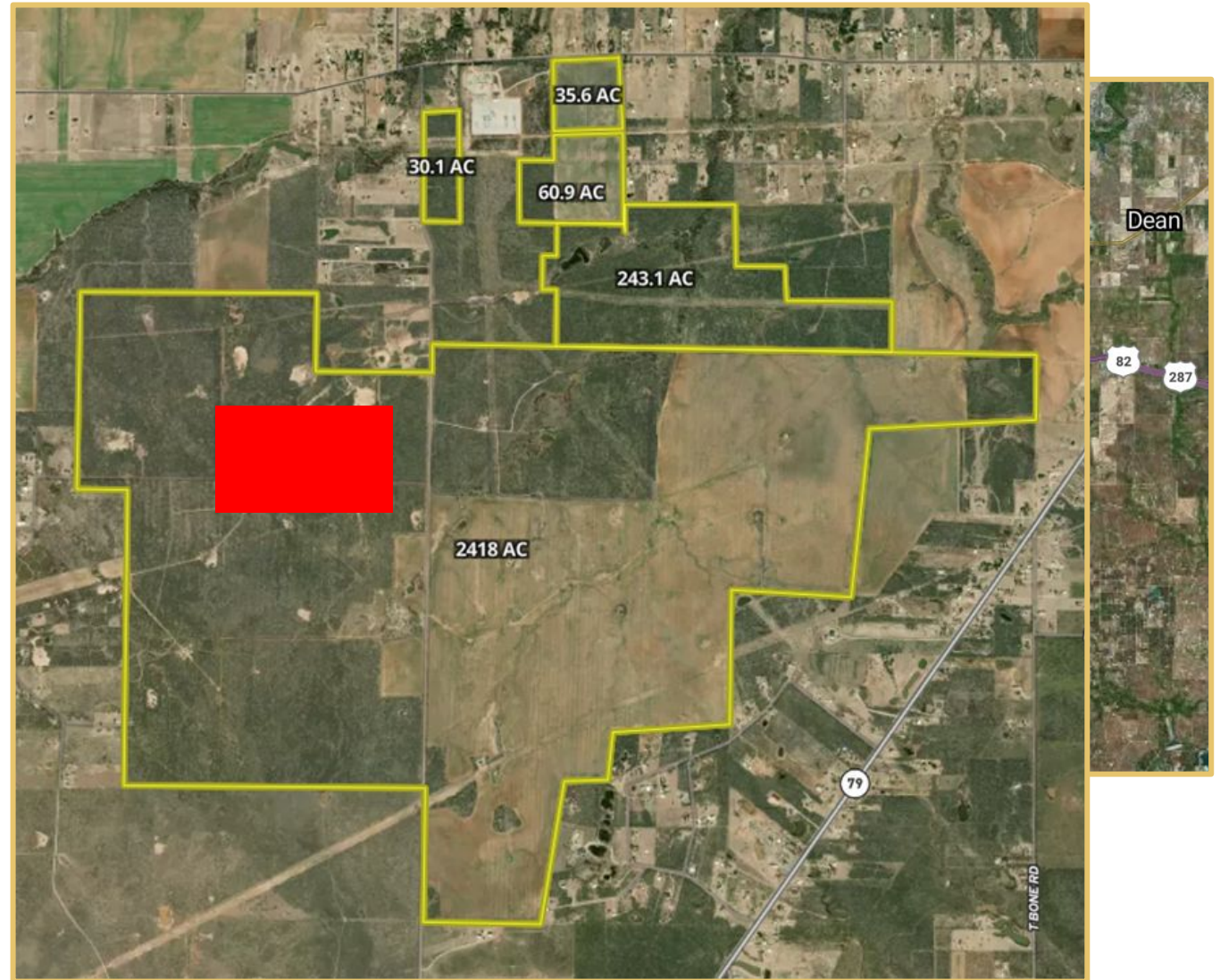
Q/A and Discussion

Next Steps



PROJECT RAPTOR

- Proposed Data Center Campus
- Google
- Approximately 2800 acres
- Potential Multi-phased development
 - Scalable PILOT structure
 - Energy availability is key factor





Estimated Average Annual Compensation for
Direct Employees (USD)

\$90,000

Estimated Capital Investment

\$1B

Estimated New Direct Jobs

50



Data center jobs

Other direct employment

Low costs for local taxing entities

Significant contractor spend and indirect growth

KEY LOCAL BENEFITS

NATIONAL SECURITY BENEFITS

Data sovereignty

Military superiority

Economic superiority



GOOD-NEIGHBOR PRINCIPLES



No increased costs for ratepayers due to project

Energy and water efficiency & resiliency

Design & operations good-neighbor practices



INITIAL QUESTIONS AND ANSWERS

- Data Center Equipment
- Energy Needs and Strategy
- Fire Suppression
- Water Use
- Construction Jobs and Associated Services
- Other Topics

REQUEST TO PARTNER



PROPERTY TAX
STRUCTURE



Tangible personal property tax

School district portion ineligible for exemption

Timeline to power

KEY CHALLENGES

QUESTIONS AND DISCUSSION

